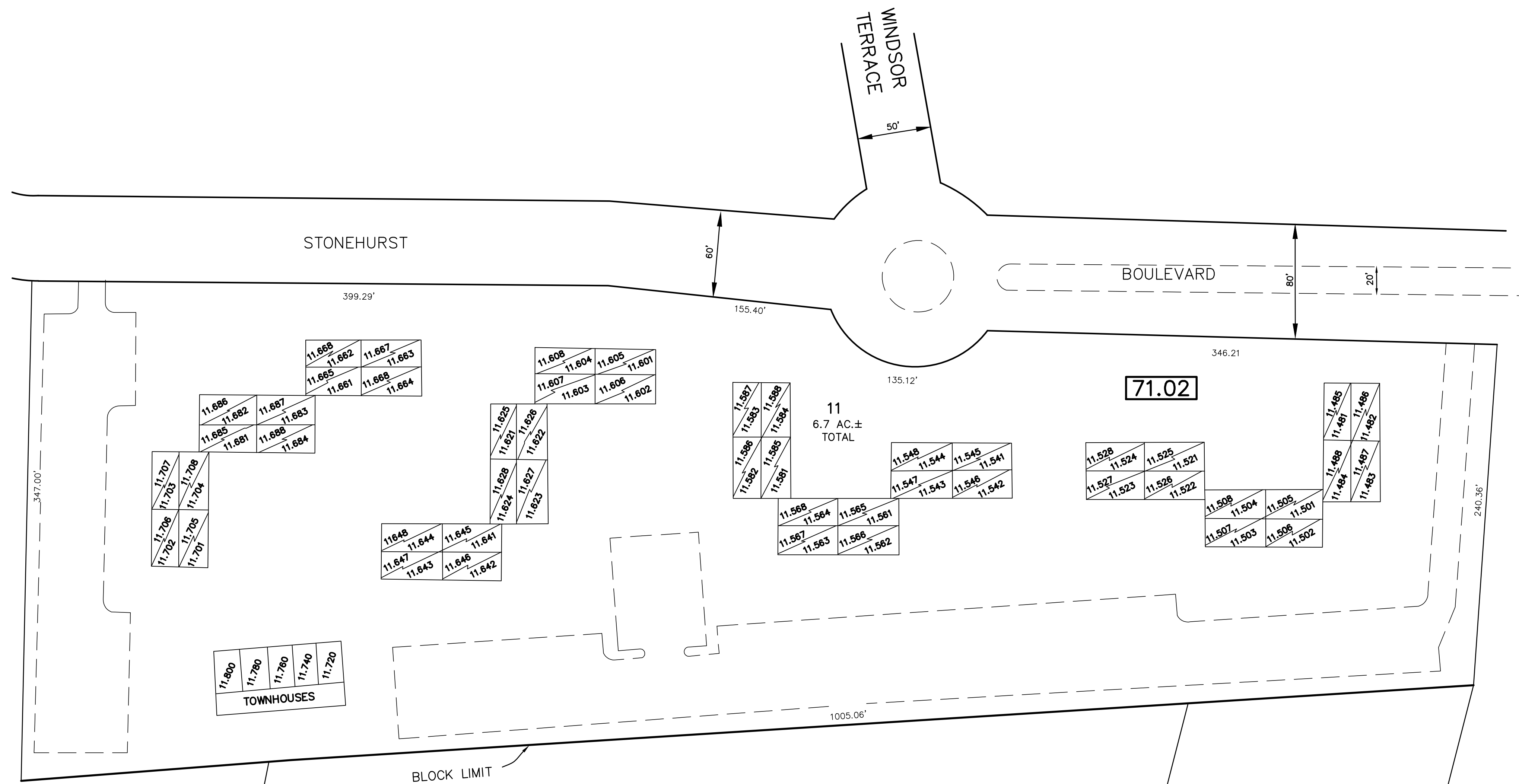
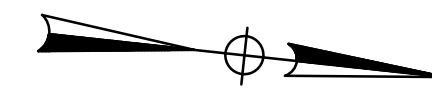


REVISIONS		
DATE	NAME	LIC. NO.

SEE SHEET 30.03

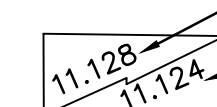
SEE SHEET 30.02



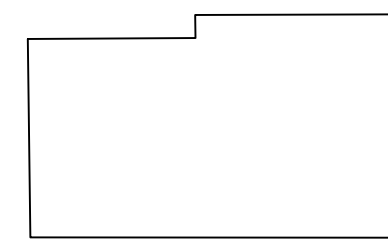
SEE SHEET 30.04

SEE SHEET 30

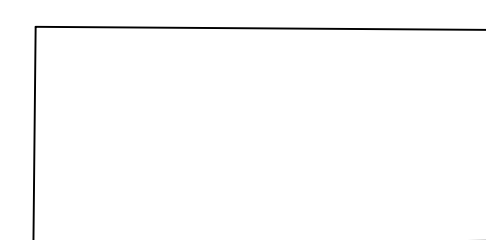
THIN DIAGONAL LINE REPRESENTS TWO LEVEL CONDOMINIUMS  
 LOT NUMBER ENDING WITH 5-8 REPRESENTS SECOND FLOOR UNITS  
 LOT NUMBER ENDING WITH 1-4 REPRESENTS FIRST FLOOR UNITS



TYPICAL UNITS



UNITS A  
704 S.F.



UNITS K  
1080 S.F.

SEE SHEET 30



THIS MAP HAS BEEN DRAWN USING COMPUTER AIDED DRAFTING/DESIGN (CAD/D) AND COORDINATE GEOMETRY.

**TAX MAP**  
**TOWNSHIP OF FREEHOLD**  
**MONMOUTH COUNTY, NEW JERSEY**  
 SCALE: 1" = 50' JANUARY, 2008  
**JOSEPH M. MAVURO, P.E., P.L.S.**  
 1 MUNICIPAL PLAZA  
 FREEHOLD, NEW JERSEY 07728

THIS MAP IS A COPY OF THE ORIGINAL MAP PREPARED BY WILLIAM HELD, P.E. & P.L.S. DATED MARCH 1962. THE ORIGINAL MAP IS ON FILE IN THE ENGINEER'S OFFICE.