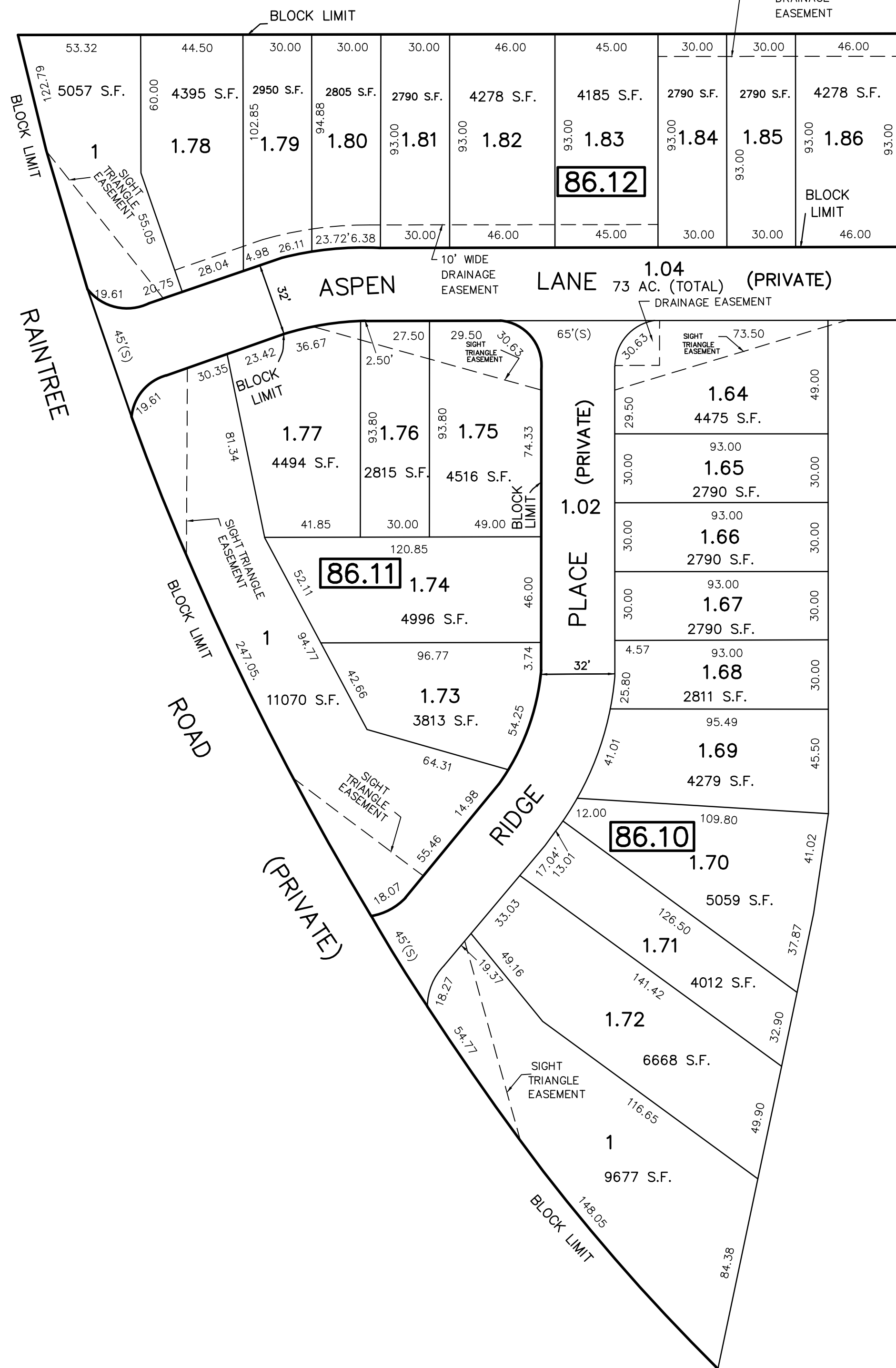
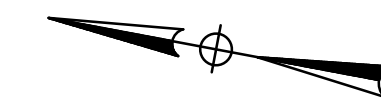


REVISIONS		
DATE	NAME	LIC. NO.

SEE SHEET 22.02

WERMOCK FARMS  
GOLF COURSE



SEE SHEET 22.11

SEE SHEET 22.13

MATCH LINE

WERMOCK FARMS  
SECTION 3 B

SEE SHEET 22.04

SEE SHEET 22.13

**TM**  
**ASSOCIATES**  
 11 TINDALL ROAD  
 MIDDLETOWN, NJ 07748  
 TEL 732-671-6400  
 FAX 732-671-7365  
 NEW JERSEY BOARD OF  
 PROFESSIONAL ENGINEERS AND  
 LAND SURVEYORS  
 CERTIFICATE OF AUTHORIZATION  
 245A27987500

**TAX MAP**  
 TOWNSHIP OF FREEHOLD  
 MONMOUTH COUNTY, NEW JERSEY  
 SCALE: 1"= 40' JANUARY, 2008  
**JOSEPH M. MAVURO, P.E., P.L.S.**  
 1 MUNICIPAL PLAZA  
 FREEHOLD, NEW JERSEY 07728

THIS MAP HAS BEEN DRAWN USING COMPUTER AIDED  
DRAFTING/DESIGN (CAD/D) AND COORDINATE GEOMETRY.

THIS MAP IS A COPY OF THE ORIGINAL MAP  
PREPARED BY WILLIAM HELD, P.E. & P.L.S.  
DATED MARCH 1962. THE ORIGINAL MAP IS ON  
FILE IN THE ENGINEER'S OFFICE.