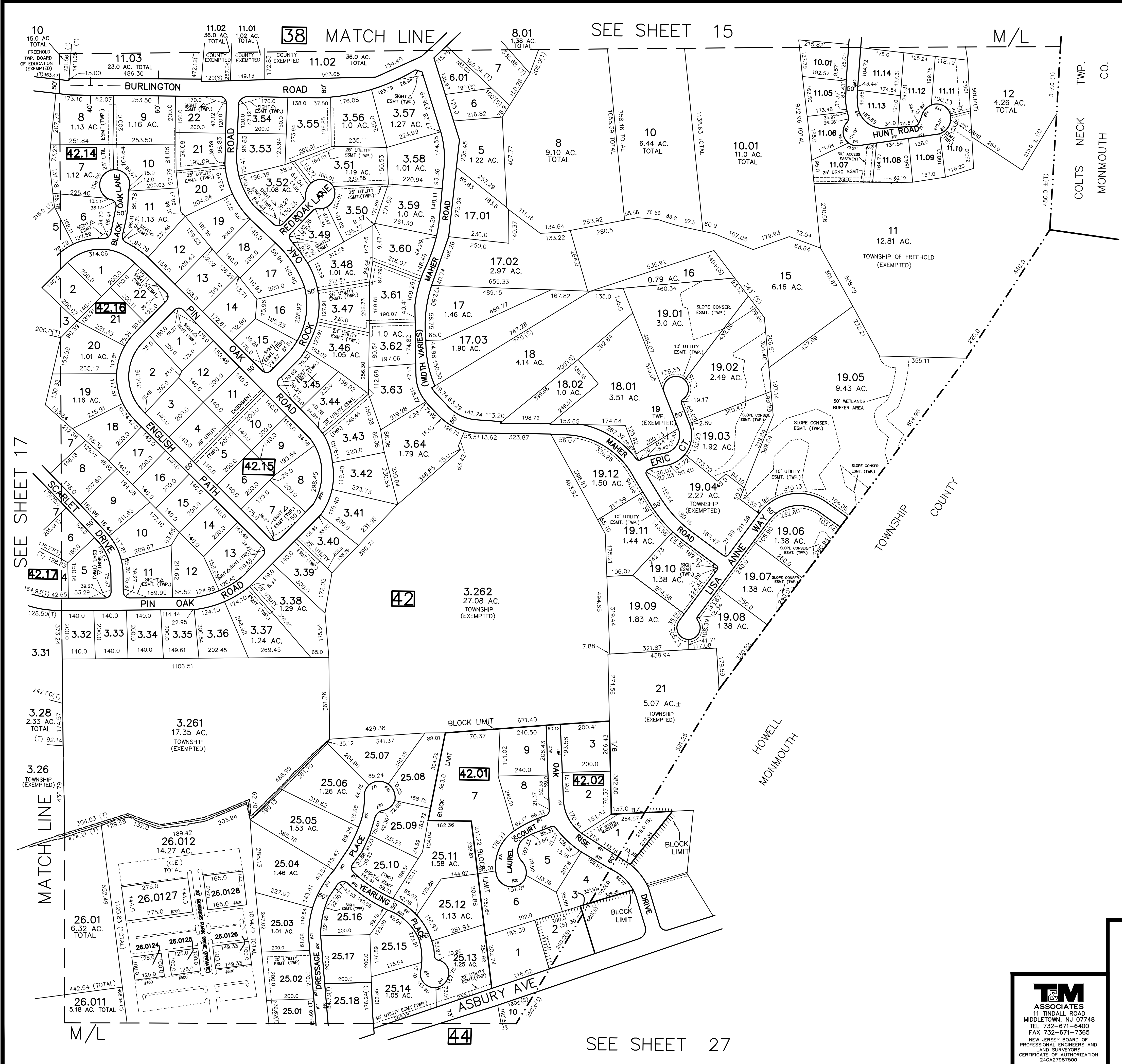


REVISIONS		
DATE	NAME	LIC. NO.
3/25/10	JOSEPH M. MAVURO	24GB02424600
9/30/10	JOSEPH M. MAVURO	24GB02424600
10/8/10	JOSEPH M. MAVURO	24GB02424600
12/14/10	JOSEPH M. MAVURO	24GB02424600
2/17/12	JOSEPH M. MAVURO	24GB02424600



TAX MAP
 TOWNSHIP OF FREEHOLD
 MONMOUTH COUNTY, NEW JERSEY
 SCALE: 1" = 200' JANUARY, 2008
JOSEPH M. MAVURO, P.E., P.L.S.
 1 MUNICIPAL PLAZA
 FREEHOLD, NEW JERSEY 07728

THIS MAP HAS BEEN DRAWN USING COMPUTER AIDED DRAFTING/DESIGN (CAD/D) AND COORDINATE GEOMETRY.

THIS MAP IS A COPY OF THE ORIGINAL MAP PREPARED BY WILLIAM HELD, P.E. & P.L.S. DATED MARCH 1962. THE ORIGINAL MAP IS ON FILE IN THE ENGINEER'S OFFICE.