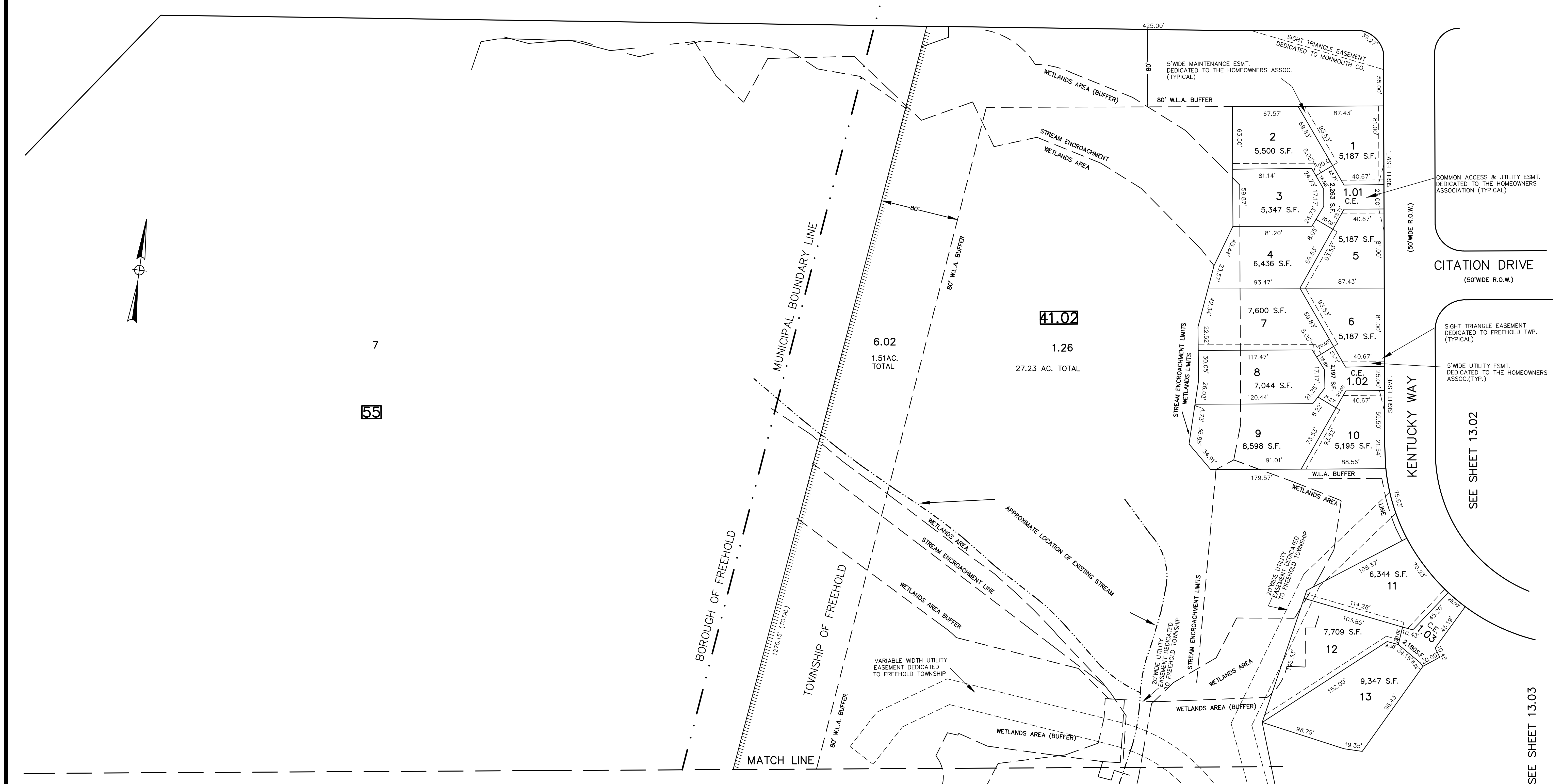


SEE SHEET 13

MONMOUTH COUNTY ROUTE 537 (aka COLTS NECK ROAD)



7  
55

41.02  
1.26  
6.02  
1.51 AC. TOTAL  
27.23 AC. TOTAL

COMMON ACCESS & UTILITY ESMT. DEDICATED TO THE HOMEOWNERS ASSOCIATION (TYPICAL)

CITATION DRIVE (50' WIDE R.O.W.)

SIGHT TRIANGLE EASEMENT DEDICATED TO FREEHOLD TWP. (TYPICAL)

5' WIDE UTILITY ESMT. DEDICATED TO THE HOMEOWNERS ASSOC. (TYP.)

SEE SHEET 13.02

SEE SHEET 13.03

SEE SHEET 13.06

REVISIONS		
DATE	NAME	LIC. NO.

**T&M**  
**ASSOCIATES**  
 11 TINDALL ROAD  
 MIDDLETOWN, NJ 07748  
 TEL 732-671-6400  
 FAX 732-671-7365  
 NEW JERSEY BOARD OF PROFESSIONAL ENGINEERS AND LAND SURVEYORS  
 CERTIFICATE OF AUTHORIZATION 246A27987500

**TAX MAP**  
**TOWNSHIP OF FREEHOLD**  
**MONMOUTH COUNTY, NEW JERSEY**  
 SCALE: 1" = 50' JANUARY, 2008  
**TIMOTHY P. WHITE, P.E., P.L.S.**  
 1 MUNICIPAL PLAZA  
 FREEHOLD, NEW JERSEY 07728

THIS MAP HAS BEEN DRAWN USING COMPUTER AIDED DRAFTING/DESIGN (CAD/D) AND COORDINATE GEOMETRY.

THIS MAP IS A COPY OF THE ORIGINAL MAP PREPARED BY WILLIAM HELD, P.E. & P.L.S. DATED MARCH 1962. THE ORIGINAL MAP IS ON FILE IN THE ENGINEER'S OFFICE.